

# Scientific Program

DAY I

8<sup>TH</sup> NOV, FRIDAY

HALL I

09.30-10.45 am **Curtain Raiser - What was new this year?**

10.45-12.00pm **Atrial Fibrillation - Case Based Session**

- Patient of HF & persistent A Fib
- Patient on beta blocker with intermittent episodes of A fib
- Looking from the Top
- Discussion

12.00-1.15pm **Rethinking current treatment strategies of BP Management**

- Home BP monitoring
- Patient of HF
- Patient of Sleep apnea
- Discussion

1.15-2.00pm **Lunch**

2.00-3.15pm **In Conversation with the expert**

- Neprilysin inhibitor could be the drug for difficult to treat HT
- Introduction of the topic
- Discussion with the expert
- Concluding remarks
- Treating HF with antihyperglycemic medications
  - Is now the right time?
- Introduction of the topic
- Discussion with the expert
- Concluding remarks

3.15-4.30pm **Sleeping Beauties.....Forgotten yet important clinical Trials**

- Atrial Fibrillation
- Hypertension
- Lipid
- Diabetes

4.30-5.00pm Break

5.00-6.15pm **Combination therapy - A trend set in India**

- How wider use of combinations will improve Control of the main cardiovascular risk factors
- Therapeutic Adherence- mainstay in reaching BP goal
- Quadruple drug therapy for prevention of CVD
- Discussion

6.15-7.30pm **Off patent Ticagrelor - Will it be a turning point in management of ACS in India?**

- Plaque to thrombosis to ACS
- DAPT up-to-date
- ACSnomics
- Discussion

7.30pm Dinner

DAY I

8<sup>TH</sup> NOV, FRIDAY

HALL II

09.30-10.45 am **Curtain Raiser - What was new this year?**

10.45-12.00pm **Personalised screening for CV Disease in diabetes?**

- Biomarkers in cardiac health
- Has anything changed after STENO?
- Calcium score & CT Angio
- Discussion

12.00-1.15pm **Reducing hypoglycaemia in patients treated with insulin**

- Impact of hypoglycaemia
- Impact of addition of SGLT2 inhibitors
- Impact of impaired renal function
- Discussion

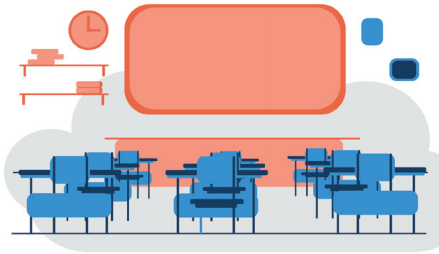
1.15-2.00pm Lunch

2.00-3.15pm **Drugs for the Heart in Diabetes - Session I**

- LDL cholesterol lowering for all
- Should LDL cholesterol targets be lowered?
- Treat or not to treat triglycerides
- Discussion

**3.15-4.30pm** **Drugs for the Heart in Diabetes - Session II**

- Will paradigm shift away from SU's?
- Have DPP4 inhibitors come to a dead end?
- Critical evaluation of evidence from randomised trials
- Empagliflozin CV Mortality HF with Antidiabetic drug
- Discussion

**4.30-5.00pm** **Break****5.00-6.15pm** **EACD Classroom - Session I**  
Personalised medication in type 2 DM

- The Era of Precision medicine in diabetes
- Personalised treatment of HF
- Discussion

**6.15-7.30pm** **EACD Classroom - Session II**  
Personalised medication in type 2 DM & HT

- What is different?
- The Gout-Diabetes Link
- Discussion

**7.30pm** **Fellows Dinner**

**9.00-10.00am** **Gaps in Knowledge - Cardiology**

- Treating diastolic HT
- Acute MI
- Uric Acid & CV disease
- Discussion

**10.00-10.30am** **Break****10.30-11.45am** **Panchayat I**

- Is basal insulin the answer to glycemic variability?
- Impact of basal insulin in Type 2 Diabetes: Real-World view
- Controlling hyperglycemia with basal insulin + SGLT2 inhibitor
- Discussion

**11.45-1.00pm** **SGLT2i Crescendo**

- Is CREDENCE a Game changer : in management of diabetes & CKD
- Is DAPA HF is a game changer in management of HF
- Panel Discussion

**1.00-2.00pm** **Lunch****2.00-3.15pm** **Open Mike - SGLT2 inhibitors**

- SGLT2 inhibitors: which & when?
- SGLT2 inhibitors - Is it time to move beyond diabetes control?
- Who should be the Leader? Diabetologist, Nephrologist or Cardiologist?
- Discussion

**3.15-4.30pm** **Opportunities to optimise management of HF**

- In a stable HF patient
- At discharge
- Panel Discussion & audience interaction

4.30-5.15pm

Adda Break

5.15-6.30pm

**Panchayat II-Blood Pressure in a 100-Year Perspective**

- Understanding Hypertension
- How did we arrive at proper targets?
- New insights into drug treatment of HT
- Discussion

6.30pm

**Award Ceremony**

- Legend of Diabetes Award

7.00pm

**Champagne Reception**

7.30pm

**Dinner**

DAY II

9<sup>TH</sup> NOV, SATURDAY

HALL II

8.00-9.00am

**Breakfast Session - Mini Debate**

- Should HbA1c still be the main target for diabetes treatment?  
Pro  
Opp
- Treating Obesity & Diabetes - Start with metformin & SGLT2 inhibitors combination  
Pro  
Opp

9.00-10.00am

**Gaps in Knowledge - Diabetes**

- Nocturnal hypertension in diabetes
- Efficacy and safety of SGLT2 inhibitors in elderly
- Combining ARNI with SGLT2 inhibitors
- Discussion

10.00-10.30am

**Break**

10.30-11.45am

**Guest Lectures-I**

- Up-to-date in management of HF
- Long term implications of A Fib
- Discussion

11.45-1.00pm

**Guest Lectures-II**

- HT Management - Identifying right patient & right target
- Blood pressure targets in current guidelines: what is left unanswered?
- Discussion

1.00-2.00pm

**Lunch**

**2.00-3.15pm** **Open Mike Symposium**

- Reducing obesity with antidiabetics
- Polypill for primary & secondary prevention
- Postprandial hyperglycemia
- Pioglitazon in clinical practice
- Should we treat prediabetes with drugs?

**3.15-4.30pm** **Insulin Symposium**

- Choosing basal insulin over SGLT2 inhibitors
- Moving from Orals to Injectables.... Why, When & How?
- Glargine U 300 Latest from ADA 2019

**4.30-5.15pm** **Adda Break**

**5.15-6.30pm** **The real science behind what we eat!**

- Gut response to food
- Intermittant fasting
- Scientific evidence of diet in cardio-metabolic health
- Discussion

**6.30pm** **Award Ceremony**

- Legend of Diabetes Award

**7.00pm** **Champagne Reception followed by Dinner**

DAY II

9<sup>TH</sup> NOV, SATURDAY

HALL III

**8.00-9.00am** **Breakfast session - Living Longer Living Better**

- Blood pressure target to <120 /<70 mmHg associates with poor outcome  
Pro  
Opp  
Lifestyle interventions don't work for most people with
- hypertension  
Pro  
Opp

**9.00-10.00am** **Digital apps for diabetes treatment and prevention: opportunities and challenges**

- Doctor and patient perspective
- Diabetes educator perspective
- Revenue model for the doctor
- Revenue for the industry

10.00-10.30am **Break**

10.30-11.45am **Contentious issues in management of Young Diabetics (<40yrs)**

- How to assess CVD risk
- Should we start insulin early?
- Should everybody receive Aspirin & statin ?
- CPeptide/Ab measurements -how to use in clinical practice?

11.45-1.00pm **Contentious issues - Diuretics in HF**

- IV decongestion therapy in-hospital
- Mineralocorticoid receptor antagonists
- When to start beta blockers?
- How to prevent hyponatremia?

1.00-2.00pm **Lunch**

2.00-3.15pm **In management of Diabetes**

- Anaemia Ferritin and Iron therapy in diabetes
- Fatty Liver, which tests? which OADs?
- D2d study- Vit D and type 2 diabetes
- Range of blood glucose in a day- A new target in type 2 dm

3.15-4.30pm **So called Vices - Advising patients based on science**

- The Chocolates
- The red wine
- Alcohol
- Discussion

8.15-9.30am

**Breakfast session - Living Longer Living Better**

- The Secret to Good Health - 10,000 Steps, fitbit & the science
- Living to 80 without going to the gym
- Discussion - Share the tricks

9.30-10.45am

**Prioritizing injectable therapies in diabetes**

- GLP1RAs: From anti-diabetic to cardiometabolic drug
- CV safety with basal insulins
- Glycaemic Goals : Strategies to achieve
- Case Discussion

10.45-11.15am

**Break**

11.15-12.30pm

**EASD Highlights**

- What was new in insulin therapy?
- What was new with SGLT2 inhibitors?
- What was new with GLP1 analogs?
- Discussion

12.30-1.45pm

**Evolution of antidiabetic therapy**

- Role of insulin in management of AMI
- Incretin-based therapies: where will we be 50 years from now?
- What Does the Future Hold?
- Discussion

2.00pm

**Lunch**



**8.15-9.30am Seniors Health**

- Monitoring for asymptomatic A Fib
- Imaging retina
- Screening for good health

**9.30-10.45am Stroke for Physicians**

- Acute stroke : Time is brain
- Control of BP in stroke
- Algorithm Based Management with Dabigatran
- Discussion

**10.45-11.15am Break****11.15-12.30pm High risk CVD & Lipids**

- The very high risk CVD-role of PCSK9 inhibitors
- Ezetimibe + statin combination
- Is it right time to screen for high LPA?
- Discussion

**12.30-1.45pm Acute MI**

- Acute ST Elevation Myocardial Infarction "The First 12 Hours"
- Post Fibrinolytic Strategies in ST Elevation Myocardial Infarction
- Post infarct remodelling - what helps?
- Panel Discussion

**2.00pm Lunch**